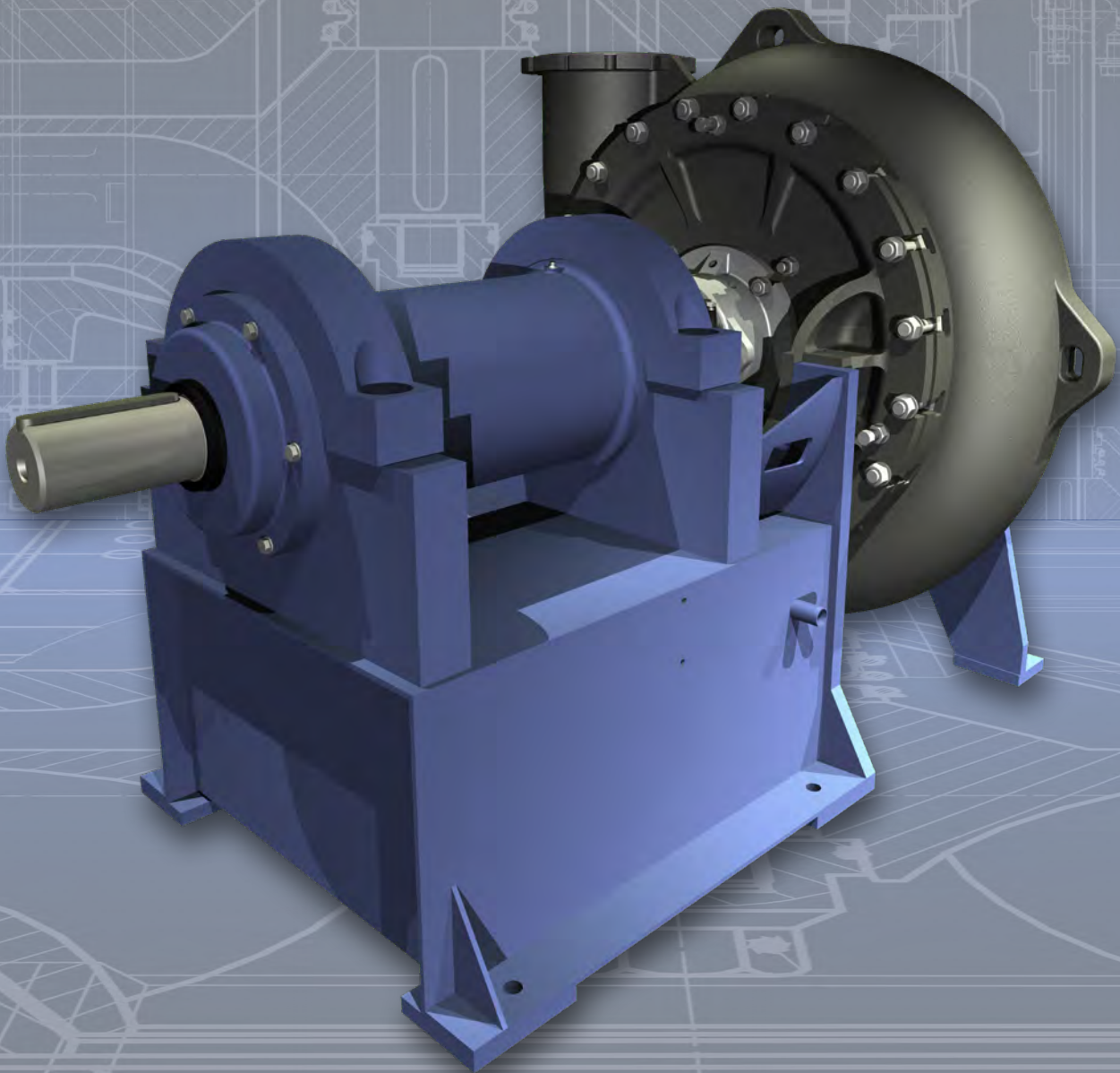




**DÜCHTING**  
**PUMPEN**

# Product Overview **TYPE WRX**



## FLUE GAS DESULFURIZATION



The flue gas cleaning in Germany started with the adoption of the „Großfeuerungsverordnung“ - a regulation for open fire - in 1982. From the very beginning DÜCHTING PUMPEN took part in this business and today has one of the largest populations in European power stations. With the development of the material **SICcast®** now almost every FGD pump is built completely in **SICcast®**. Through this unique and innovative technology our products are increasingly favored beyond the borders of Europe.

## WATER TREATMENT



DÜCHTING PUMPEN has worked in desalination with high-pressure centrifugal pumps in reverse osmosis now since the early 90s. While the demand for higher quantities and pressures has risen over the past years DP has kept up with the development and can now offer high-pressure pumps, including energy recovery units. The materials used for these pumps have been proven in numerous applications and the performance data has been adjusted to market demands by means of CFX programs.

## MINING



Since the early 50s DÜCHTING has supplied pumps to the mining industry, especially German hard coal mining - at first only as maintenance and primarily with respect to underground mining. In the following years new pumps and wear-resistant centrifugal pumps for the processing of coal were added. Today DÜCHTING PUMPEN covers the entire market for centrifugal pumps in mining including high-pressure cooling centrifugal pumps.

## INDUSTRY / OIL & GAS



The chemical industry profits from the **SICcast®** - material of DÜCHTING PUMPEN.

As far as this field of application is concerned the high chemical resistance of **SICcast®** is of primary importance: its corrosion resistance with respect to acids will even exceed that of Ni-alloys.

These pumps are entirely metal free in all wetted areas - even the single- or double-acting mechanical seals.





### Quality through experience

**DÜCHTING PUMPEN** is a privately owned German company with more than 77 years of experience in the field of advanced centrifugal pumps for use in many different industries.

Our motto “Quality Through Experience” forms the basis of our sophisticated product range. The capabilities of our company in the construction, manufacturing, testing and commissioning of our products is highly respected in the industries we serve.

Our reputation is based on a sustainable company policy, focusing on efficiency, reliability, innovation and thorough customer after-sales service which is provided by partners in the countries where our products are installed.

In order to meet the current demand for highly efficient and reliable products in seawater desalination, DÜCHTING PUMPEN offers optimized high-pressure pumps and energy recovery turbine units. To minimize total energy costs in high pressure seawater desalination plants, we are at your service during both design and operation.

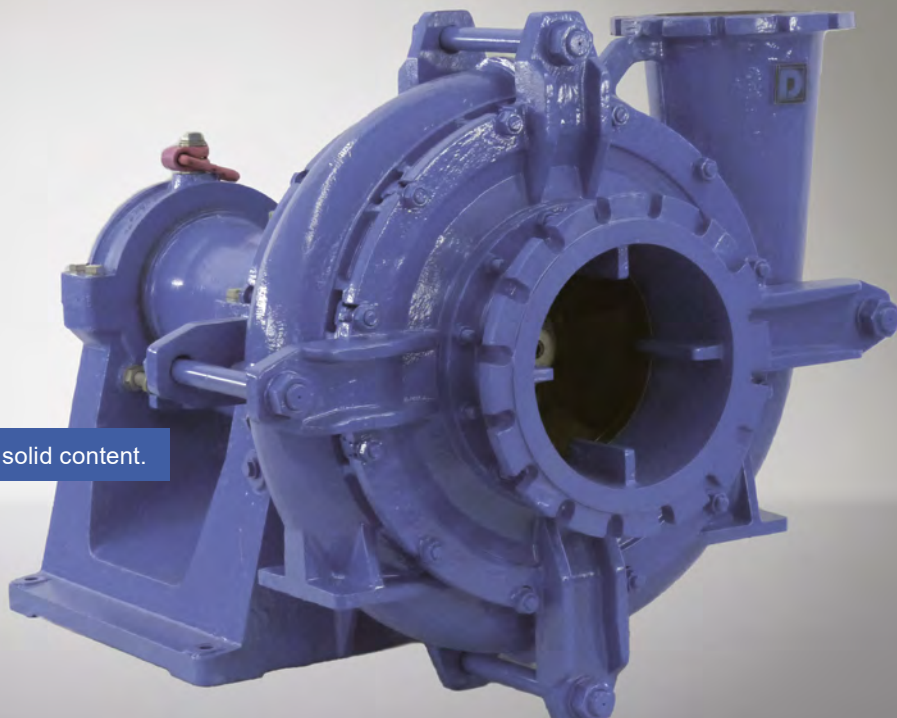




Heavy duty pump

## TYPE WRX

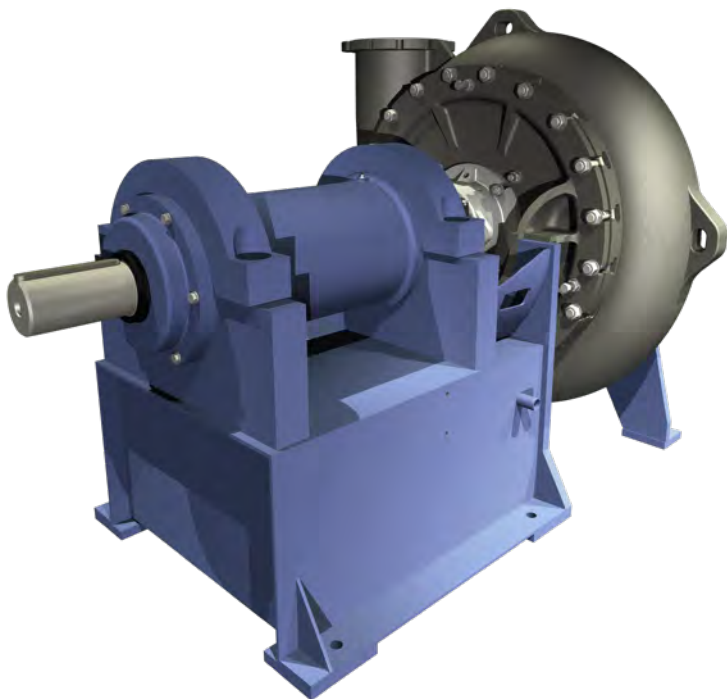
Suitable for abrasive medium with very high solid content.



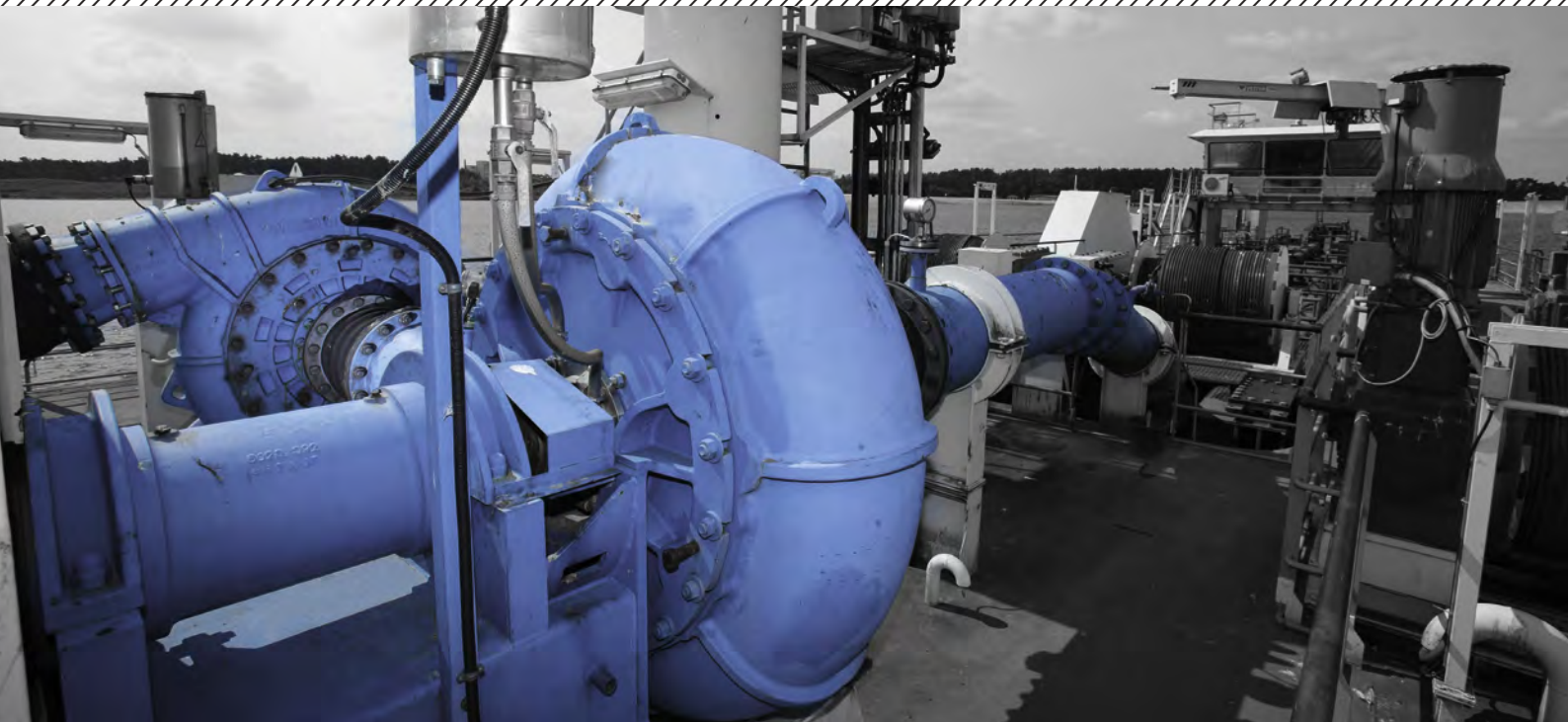
### WRX Design

Highly wear-resistant pump with closed impeller and wear plates on suction and bearing side.

- Pumping of slurry liquids with high sliding wear as well as on mechanical impact by high levels of coarse grain (grain size up to 200 mm)
- The design allows the use of very hard materials
  - ▶ **min. 550 HB**
- Suction: axial
- Discharge: tangential
- Axially adjustable impeller
- Shaft sealing by stuffing box or mechanical seal
- Various impeller shapes are possible (e.g. 2- or 3-vaned)
- Different arrangements available (e.g. vertical)
- Back pullout design (the complete rotating assembly can be removed while the casing remains in its position)
- Durable, oil or grease lubricated bearings
- Direct or belt driven
- Usage as underwater pump through special assemblies possible
- Counterclockwise rotation design possible







## Fields of Application

**Particularly suitable for pumping highly abrasive & corrosive liquids with fine to very coarse solids.**

- Special foundation
- Mechanised tunneling
- Gravel and Sand Industry
- Mining and Ash Handling
- Furnaces
- Offshore applications
- Traffic & Supply tunneling
- Zinc oxide production
- Sugar industry

## Technical Data

<b>Pump Size:</b>	<b>DN 65 to DN 400</b> 2 1/2" to 16"
<b>max. Pressure:</b>	<b>10 bar / 16 bar</b> (150 PSI / 230 PSI)
<b>max. Flow:</b>	<b>4000 m³/h</b> (18000 gpm)
<b>Total head:</b>	<b>up to 90 m (300 ft)</b>
<b>Rotating Speed:</b>	<b>up to 1200 rpm</b>

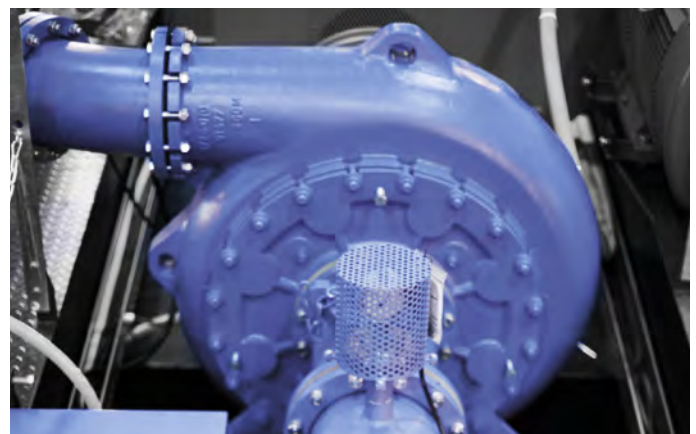
## Materials

<b>Volute casing:</b>	0.9650 (quenched and tempered)
<b>Impeller:</b>	0.9650 (quenched and tempered)
<b>Wear plates:</b>	0.9650 (quenched and tempered)
<b>Shaft:</b>	1.0503 (C45)

**The WRX - Also known as „suction dredger pump“**



For more information please visit  
[www.duechting-suction-dredger.com](http://www.duechting-suction-dredger.com)



### Bearings

Oil or grease lubricated heavy duty bearings.

### Shaft Seal

Balanced stuffing box or mechanical seal.

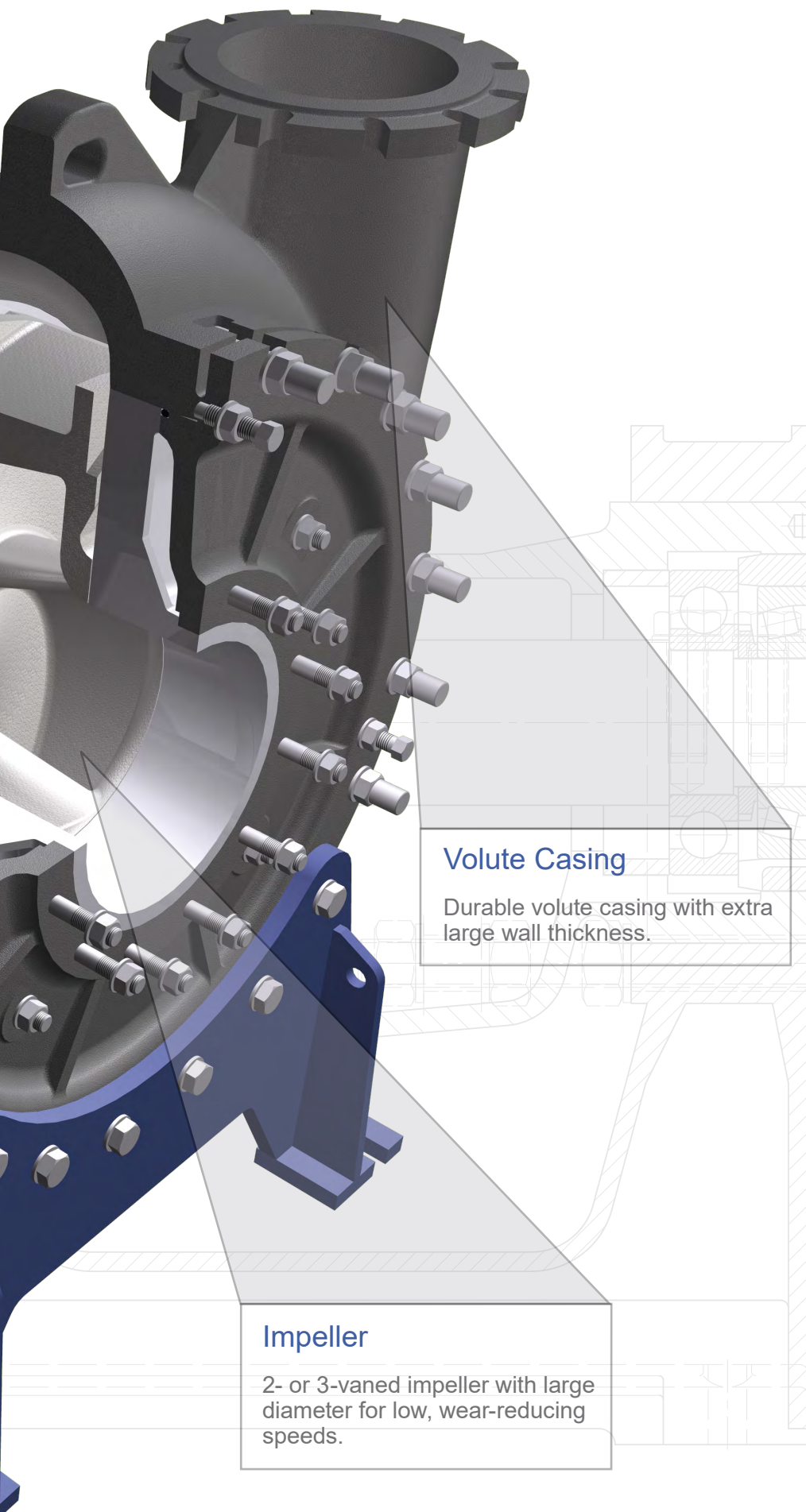
### Bearing Housing

Heavy duty design to handle high forces

### Wear Plates

On suction and discharge side.



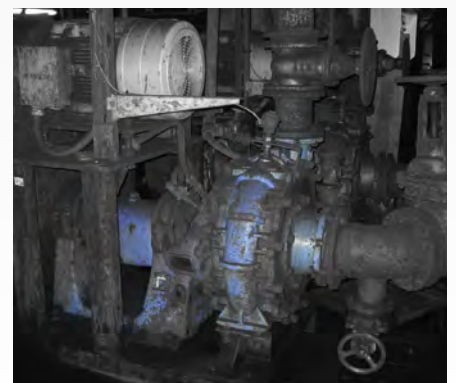
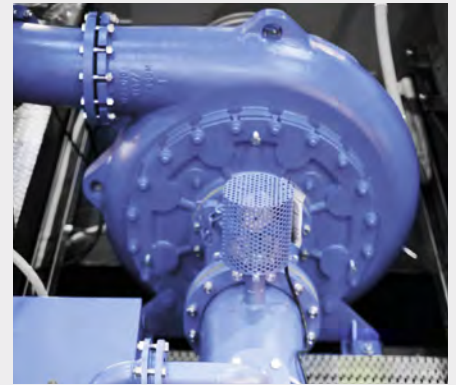


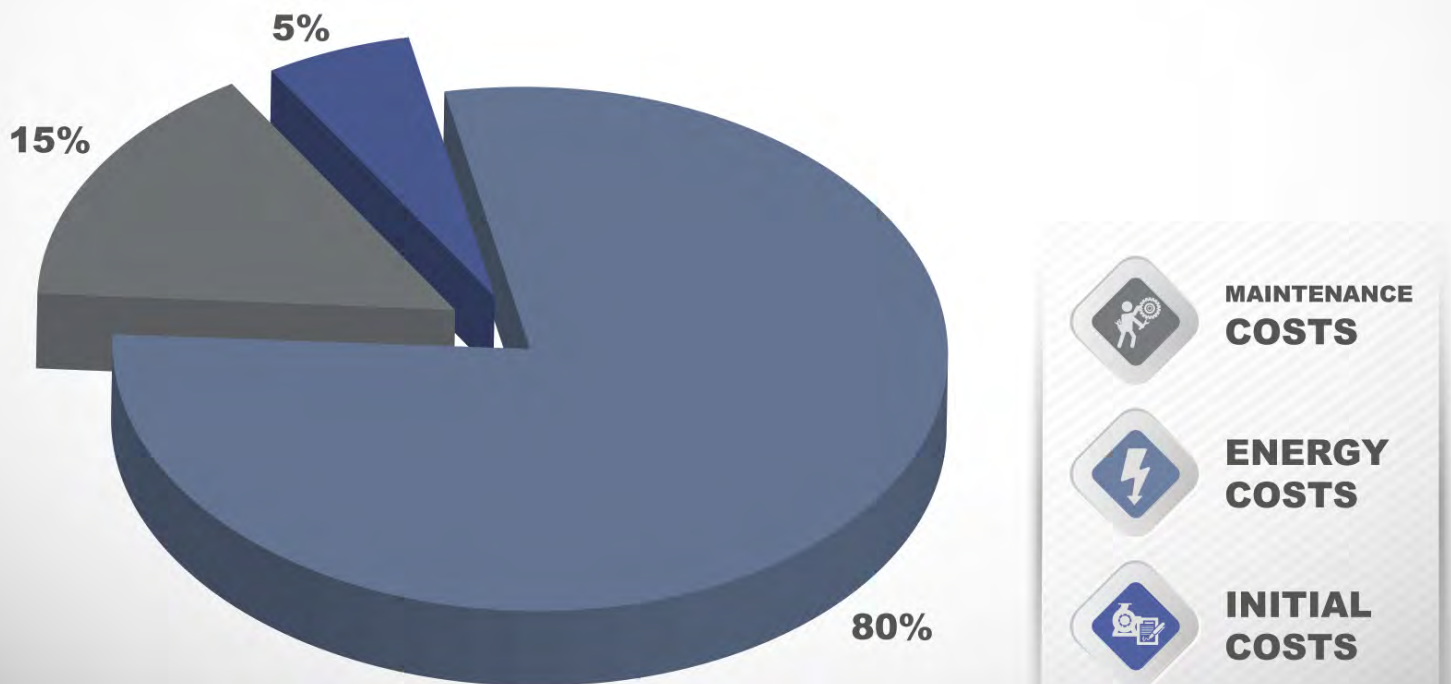
### Volute Casing

Durable volute casing with extra large wall thickness.

### Impeller

2- or 3-vaned impeller with large diameter for low, wear-reducing speeds.





## Life-Cycle-Costs

### Average life cycle costs for industrial pumps.

Evaluating the Life-Cycle-Costs will identify the most financially attractive alternative. The initial purchase price is a very small part of the life cycle cost for high usage pumps. Minimizing energy consumption and plant downtime have a big influence on the total Life-Cycle-Costs.

### Energy costs

DÜCHTING PUMPEN offers a wide range of impeller sets for high efficiencies.

- high efficiency leads to low energy costs

### Maintenance costs

Robust design leads to long lifetime of the pump parts.

- low wear leads to low maintenance work and costs

Easy accessible and changeable wear parts lead to short downtime for overhauls.

- short downtime leads to low maintenance costs







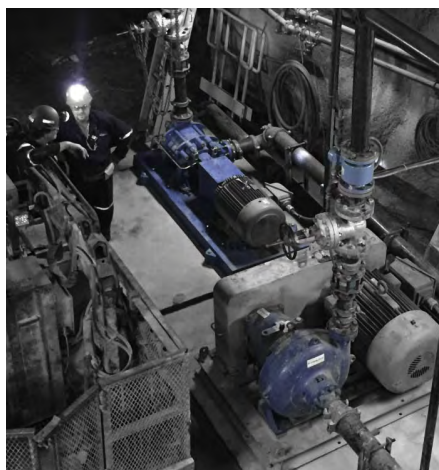
## After-Sales-Service & Spare Parts

With its service and spare parts department DÜCHTING PUMPEN offers the full range of After-Sales-Service.

With its own service technicians and several service partners worldwide DÜCHTING Service is everywhere and always available.

### Inhouse - Service

- Maintenance
- rebuild & repair
- damage analysis
- performance tests with vibration analysis
- site staff training
- and much more



### Site - Service

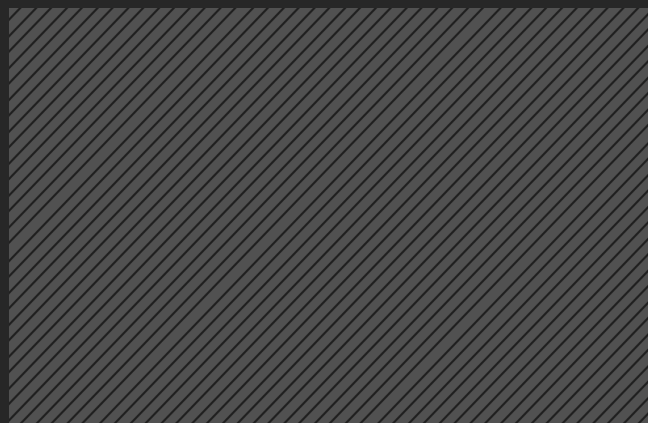
- start-ups
- commissioning assistance
- Revisions
- Repairs
- Troubleshooting
- laser alignment
- vibration & condition analysis
- flow rate measuring
- whole pump rebuild and repair
- mechanical seal exchange
- on-site training
- and much more



Please contact us at:

+49 23 02 / 969 - 0

or send a message to [service@duechting.com](mailto:service@duechting.com)



## **DÜCHTING PUMPEN Maschinenfabrik GmbH & Co. KG**



Wilhelm Düchting Str. 22  
58453 Witten, Germany



+49 2302 / 969 - 0



+49 2302 / 690 - 443



[www.DUECHTING.com](http://www.DUECHTING.com)



[info@duechting.com](mailto:info@duechting.com)

